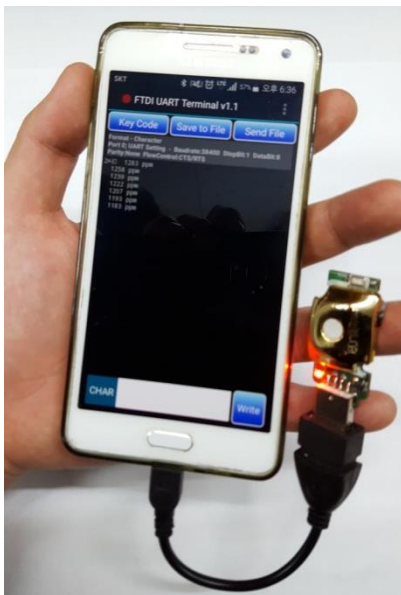


General

Version 1.1

MT-200 series is world's smallest USB CO₂ Monitor. MT-200 works with Desk-Top or Notebook, Smart-Phone and others. it gives 4 different level of LED light depending on CO₂ concentration level.

ELT SENSOR Data Sheet for MT-200

**Features**

- Non-Dispersive Infrared (NDIR) technology used to measure CO₂ levels.
- The world smallest size USB CO₂ monitor
- Pre-calibrated
- Gold-plated sensor provides long-term calibration stability.
- .Support 2-min Manual Re-Calibration with MCDL Button Switch
- Support to USB 2.0
- Power: USB port of PC USB standard-A, Smart-Phone (Micro-B USB plug), USB Power-Bank etc.
- Size : 19.9mm x 56mm x 10.6mm (USB-A type CO₂ module)
- Weight : 10 gram

MT-200 Specifications

General Performance

Operating Temperature : -20 ~ 60 °C

Operating Humidity : 0 ~ 95% RH (Non-condensing)

Operating Environment : ambient air in and out of residential or Commercial buildings.

Storage Temperature : -30 °C ~ 70 °C

CO₂ Measurement

Sensing Method : NDIR (Non-dispersive Infrared)

Measurement Range : 0 ~ 10,000 ppm (~ 5% , 10% are optional)

Accuracy : ±50ppm ±3% of reading for 0~10,000 ppm (option: ±300ppm ± 3% of reading up to 5%, 10%)

Response Time (1/e) : 40 seconds (c.f. T90 : 65 seconds)

Sampling Interval : 3 seconds

Warming-up Time : < 6 seconds (for Operation), 5 minutes (for Accuracy)

Electrical Data

Power Input : 3.5V ~ 5.2V (USB)

Current Consumption : Normal mode : 20mA, Peak : 230mA

Ordering Code

Code	Specification
MT-200	MT-200 + Micro-5pin-OTG, 'ELT WSD' window program for PC/NoteBook

MT-200 is basic model which gives USB output and it support only 2-min MCDL by users.

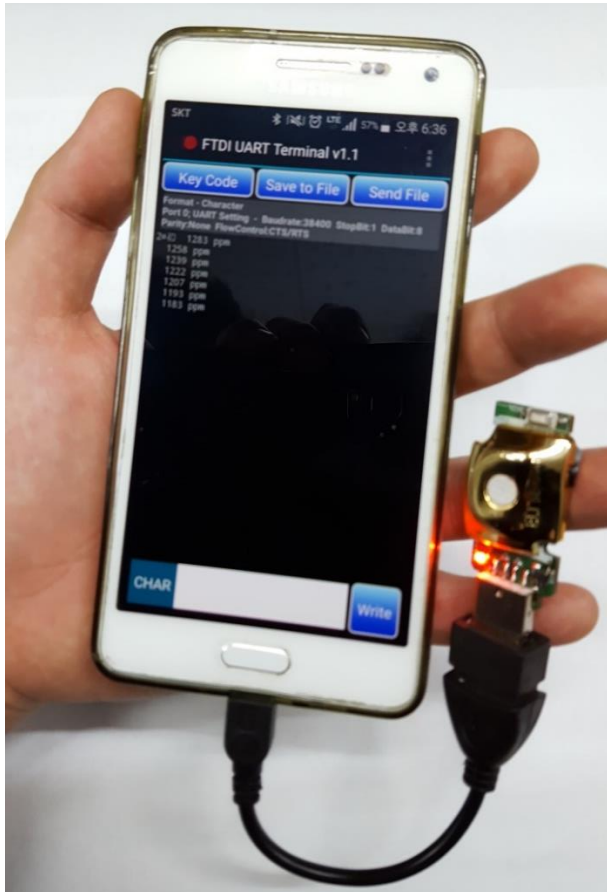
Basically Manual Re-Calibration (2-minutes' MCDL) are executable by users with Button Switch click 1 time. (it should be kept stay over 2min in fresh Air.)

Demonstration with Smart Phone.

Android App



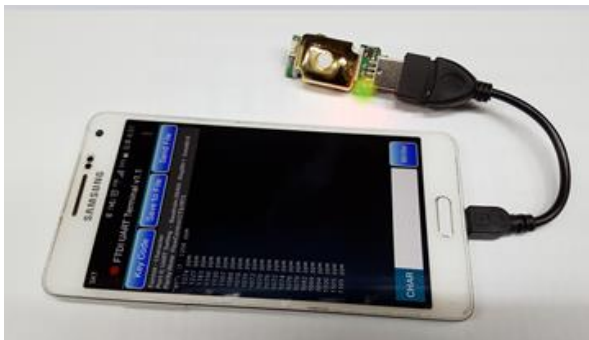
<http://www.ftdichip.com/Android.htm>



< App. setting >

1. install FTDI App.
2. Execute FTDI UART App.
3. Setting
 - ① Baud Rate → 38400
 - ② Flow control → CTS/RTS

※ Android USB Serial App. : FTDI UART Terminal, Android USB Serial Monitor, etc...



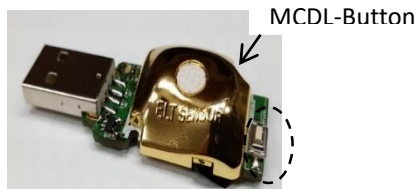
Range	LED
under 1000ppm	Green ON
1000≤[CO2] < 2000ppm	Green Blink



Range	LED
2000≤[CO2] < 3000ppm	RED ON
Over 3000ppm	RED Blink

2-minute Manual-Calibration Function Usage.

i. Please locate MT-200 at ambient fresh air, powered via OTG cable from memory bar or phone.

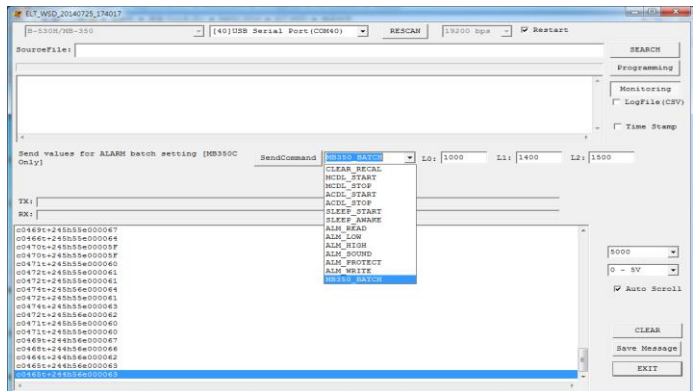


- ii. MCD can be done on both Android smartphone and window application program.
- iii. MCD start and finish by pressing MCDL-Button 3 seconds. LED blinks between **Red** and **Green**

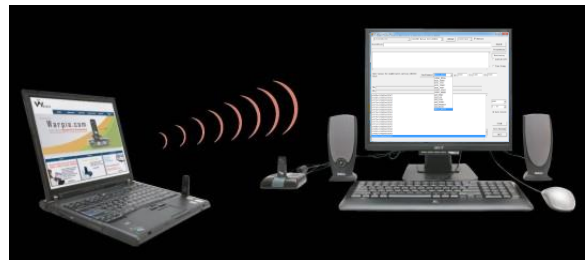


by turns during calibration. Please make sure to check if CO2 measurement became near 400ppm after 2 minutes using 'FTDI UART Terminal'. Please make sure to locate sensor fresh air, near of 400ppm and no one is near sensor during MCDL.

iv. 'MCDL-START' and 'MCDL-END' menu can start / end MCDL on windows program 'ELTWSO'



Monitoring Test with Notebook or Desk-Top (ELTWSO_EK100 S/W)



ELT SENSOR Corp.

Chunui Technopark 101-909) 36, Bucheon-ro 198beon-gil,
Bucheon-si, Gyeonggi-do, 420-857, Korea
Phone. +82-32-719-8055, <http://www.eltensor.com>

2014 ELT Sensor All rights reserved
2019. Sep.